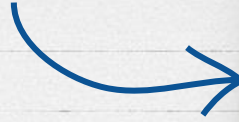


Heather



Welcome!

Virtual Credit
Recovery: An Equitable
Response to Our COVID
Grading Conundrum



Sam

The Rest of Our Team

→
Carla

Summer Credit
Recovery
Program
Coordinator



The Rest of Our Team

GEAR UP
Site Lead

Yaritza





Western Washington University

Bellingham, WA

Our **P**lan today:

I. **P**roblem

→ We'll explain why we needed to do this work.

II. **P**rocess & Partners

→ We'll tell you how we set up our program.

→ We'll highlight all the supports we needed.

III. **P**roof

→ We have data and testimonials for you!

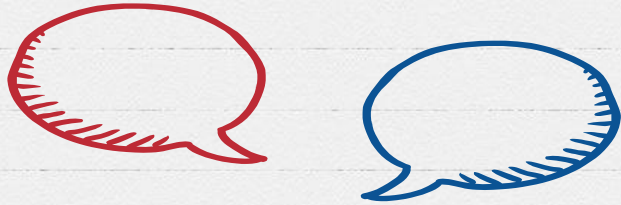
IV. **P**rojections

→ We'll talk about our next steps.

We're not finished!

A large, bold, blue capital letter 'P' is centered on a bright yellow rectangular sticky note. The sticky note is attached to a white background with a small piece of clear tape at the top. The entire scene is set against a light brown wooden surface. The sticky note has a slightly folded bottom-left corner.

Turn & Talk



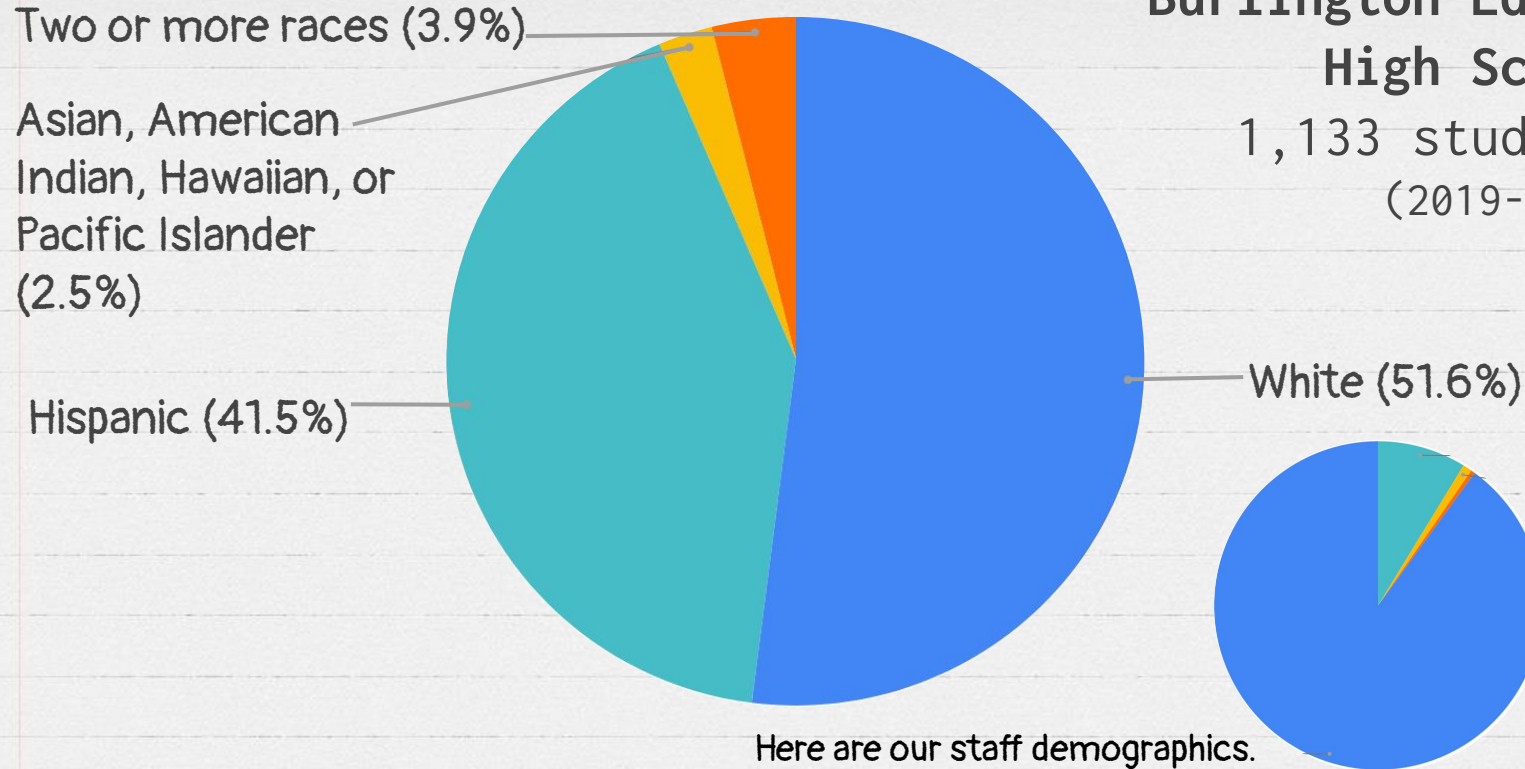
- Your name
- Your "P" word :)
- School District and State where you work

Quick check in with
this group:



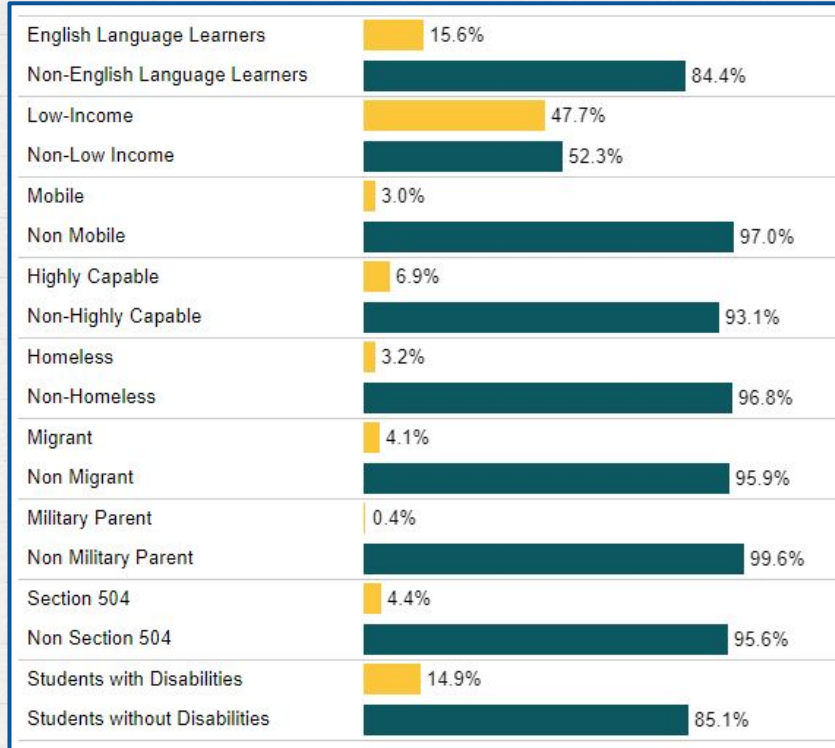
Burlington-Edison High School

1,133 students
(2019-2020)



Here are our staff demographics.

Burlington-Edison High School



Our **P**lan today:

I. **P**roblem

→ We'll explain why we
needed to do this work.

II. **P**rocess & Partners

- We'll tell you how we set up our program.
- We'll highlight all the supports we needed.

III. **P**roof

- We have data and testimonials for you!

IV. **P**rojections

- We'll talk about our next steps. We're not finished!

A large, bold, blue capital letter 'P' is centered on a bright yellow rectangular sticky note. The sticky note is attached to a white background with a small piece of clear tape at the top. The note has a slightly folded bottom-left corner, giving it a three-dimensional appearance. The letter 'P' is the first letter of the word 'Plan' from the title above.



The **P**roblem:

Spring 2020*	incompletes
Semester 2	165

* A, B, or I were the options for our district. Any student who "engaged" at all received a B.

"Incomplete" was meant to be a temporary grade.

20-21 school year**	incompletes
Semester 1	847
Semester 2	882
Total	1729

**Back to regular grading except no F's yet.



Our **P**lan today:

I. Problem

→ We'll explain why we needed to do this work.

II. **P**rocess & Partners

→ We'll tell you how we set up our program.

→ We'll highlight all the supports we needed.

III. Proof

→ We have data and testimonials for you!

IV. Projections

→ We'll talk about our next steps. We're not finished!

A large, bold, blue capital letter 'P' is centered on a bright yellow rectangular sticky note. The sticky note is attached to a white sheet of paper with a small piece of clear tape at the top. The white paper is placed on a light brown wooden surface. The sticky note has a slightly folded bottom edge.

Preparation for Summer 2020

HEATHER:

- ✓ Monitored of Incomplete data
- ✓ Expanded relationship with WWU
- ✓ Supported process of hiring & training mentors
- ✓ Set up summer schedule
- ✓ Communicated with students and families

SAM:

- ✓ Adapted curriculum for Algebra 1A & Integrated Science A
- ✓ Used comprehensive gradebook sheets to place students



Summer 2020

July 7-August 20

Tues/Thurs

2 hour sessions

20 students engaged
21 credits recovered



- Target audience was 9th graders
- 2 certified teachers hired to build curriculum/assess
- 7 mentors hired (average of 2:2 ratio)
- 2 GEAR UP staff ran Zoom meetings

Lesson 3: Functions, Part 1

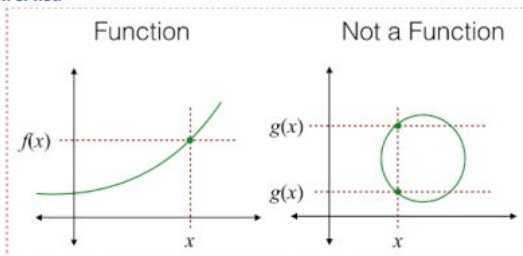
Mini Lesson: <https://youtu.be/kvGslo1TmsM>

If you're looking at a graph, you can use the **VERTICAL LINE TEST** to decide if you're looking at a function or not:

**FUNCTION
OR NO?**

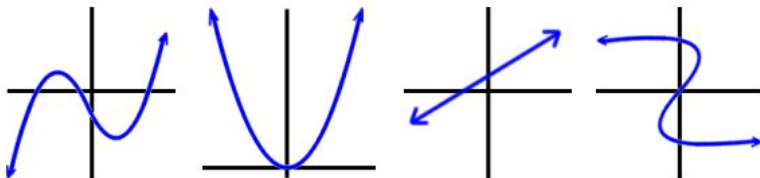


★ A function only has **ONLY ONE** output (y) for each input (x), so a vertical line **CANNOT** go through a function's graph more than once.



Practice:

Look at the graphs. Determine whether each is a function or not!



[CLICK HERE TO SEE THE ANSWERS!](#)

↓ keep scrolling...

Okay, but what if you don't have a graph to help you decide?! Try these out!

<p>1] Rewrite the relation given in the mapping diagram as a scatterplot.</p> <p>Is the relation also a function?</p>	<p>2] Rewrite the relation given in the scatter plot as a mapping diagram.</p> <p>Is the relation also a function?</p>												
<p>3] Rewrite the relation given in the table as a mapping diagram.</p> <table border="1"> <thead> <tr> <th>x</th> <th>y</th> </tr> </thead> <tbody> <tr> <td>1</td> <td>-2</td> </tr> <tr> <td>-3</td> <td>-1</td> </tr> <tr> <td>1</td> <td>0</td> </tr> <tr> <td>2</td> <td>2</td> </tr> <tr> <td>0</td> <td>3</td> </tr> </tbody> </table> <p>Is the relation also a function?</p>	x	y	1	-2	-3	-1	1	0	2	2	0	3	<p>4] Rewrite the relation given in the scatter plot as a set of ordered pairs (NOT a table).</p> <p>Is the relation also a function?</p>
x	y												
1	-2												
-3	-1												
1	0												
2	2												
0	3												

[CLICK HERE TO SEE THE ANSWERS!](#)



Okay! Once you've done enough practice problems to feel comfortable and ready, **take the quiz!** Your mentor has the code for the Google Form.

This slide is from the Radiometric Dating lesson:

Practice With Half-lives

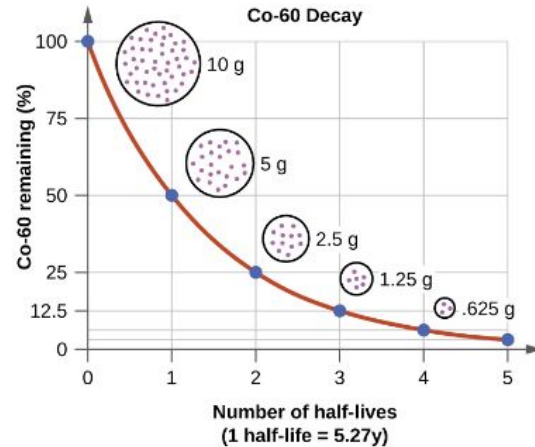
Cobalt-60 decays to Nickel-60. One half-life takes 5.27 years

If you start with a 10 g sample of Co-60, how many half lives until there is only 1.25 g of parent material left?

Click to add text

How long does that take in years?

Click to add text



This slide is from the Speciation & Extinction Biology lesson:

THESE QUESTIONS GO WITH THE ARTICLE!

How would you describe WHAT speciation is?

Click to add text

Give three examples of geographic barriers that could split up a species into two or more groups!

Click to add text

Click to add text

Click to add text

Summarize the situation with the squirrels and the Grand Canyon.

Click to add text



Harris's Antelope Squirrel
(south side)



White-Tailed Antelope Squirrel (north side)

Image credit: left, image modified from [Ammospermophilus harrisi](#) by Ryan Johnston, [CC BY 2.0](#); right, image modified from [Ammospermophilus leucurus](#) by Jarek Tuszynski, [CC BY-SA 3.0](#)





Algebra 1 : Polynomial
Factors & Products



Geometry : Transversals &
Angle Relationships



Integrated Science :
Hydroelectric Dams



Biology : Ecosystem
Dynamics

Scan these codes to see the interactive nature of
these assignments.

These are also in your packets.

Assessments and Grading

Proficiency = 80%

Anything below 80% needed to be redo or retaken.

✓ Real-time grade updates was essential for mentors + Carla.



Quizzes were all in Google Forms.



Sample Science Quiz



Sample Math Quiz

Partners: we needed help from all over

Skyward Specialist

Our tech department pulled every kind of report we asked for, during the summer and sometimes on short notice. We shared our successes with them.



Our program wouldn't exist without mentors hired, trained, and compensated through WWU's Compass 2 Campus program



Western Washington University

Counseling Department

Every passed class meant a schedule needed to be adjusted for the upcoming school year.



We had the full support of our building principal.



Administration

SUMMER MATH & SCIENCE CREDIT RECOVERY

for 9th and 10th graders



TUESDAYS &
THURSDAYS

JULY 12TH-
AUGUST 26TH

Virtual via Zoom (but not lame, we promise), self paced, proficiency based (earn a P grade) Meet with college student mentors twice a week

COURSES OFFERED

Algebra 1, Geometry,
Integrated Science & Biology



SCAN TO
SIGN UP

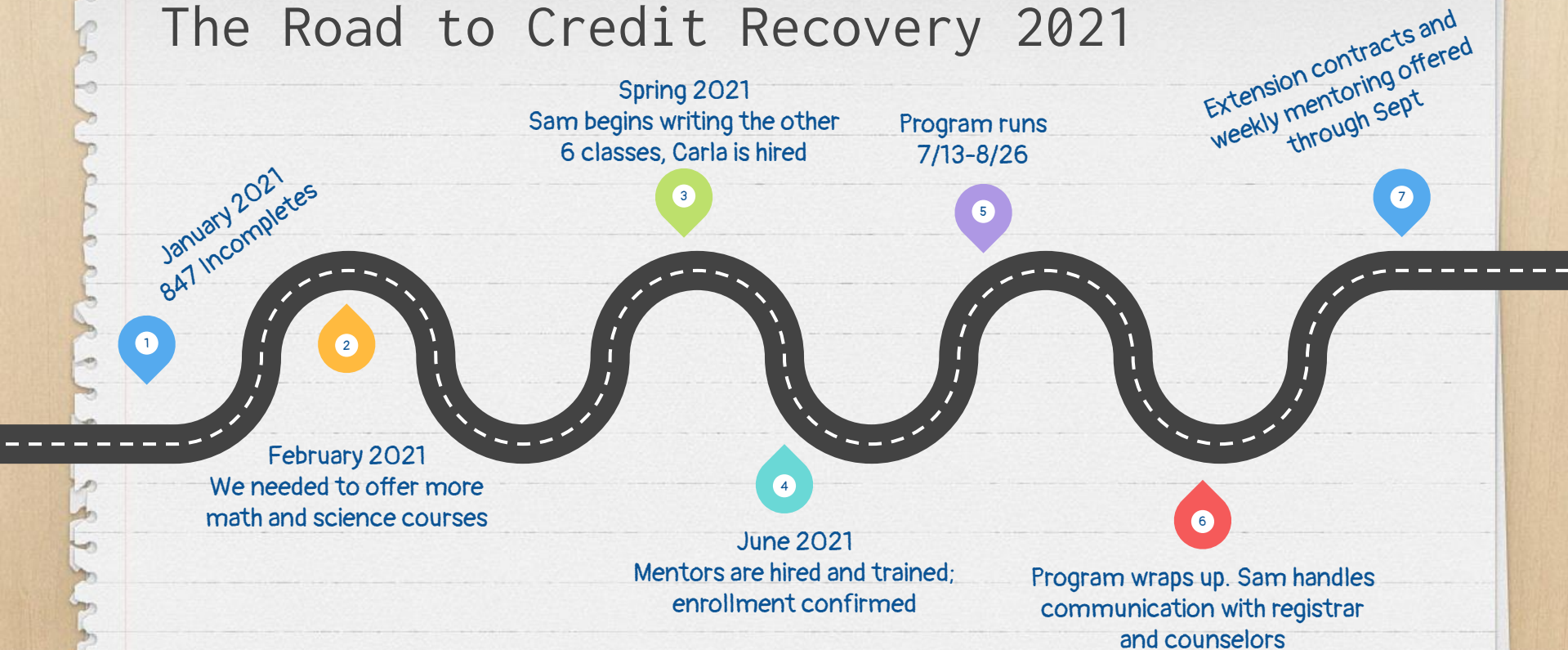


“ GEAR UP been has helpful to me
and I would say has definitely made me
a better person both in school and life.
-Anthony Hernandez Gomez
Class of 2023

Recovered Algebra 1A last summer and
regularly attends virtual mentoring ”

- Advertised to Counseling Dept, students and families
- Posted and hired teaching & coordinator positions
- Met via Zoom with every student + family member
- MOU with Western was in place, only needed updating
- Requested additional funds
- Hired and trained mentors
- Set up spreadsheet, mentor emails
- Held supply pick up

The Road to Credit Recovery 2021





Mentors
&
Students



Program
Coordinator,
Carla

Critical Tools for Success

Carla facilitated student/mentor meetings via Zoom breakout rooms.

Mentors did the tutoring!

Sam was the "teacher on record" = reviewing scores and issuing grades

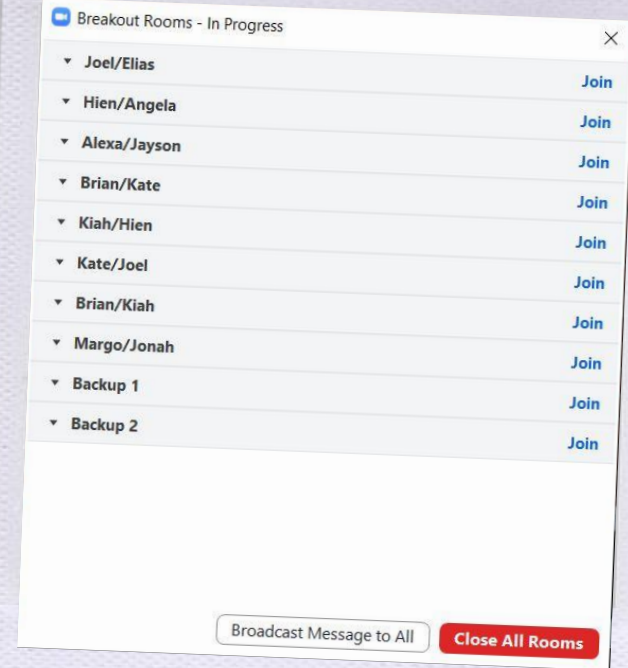
Tools

- shared spreadsheet
- Zoom
- Signal Vine



Daily Routine

- 15 min morning check in w/ mentors
- Set up breakout rooms
- "Question of the Day"
- Take attendance
- Breakout
- Text tardies via Signal Vine
- Rounds on the hour at minimum
- Support where needed



self select Zoom breakout rooms

mass texts
to students

SignalVine

University of Washington GEAR UP | Logout Tools

Welcome, Heather

Try the New Signal Vine!

9469

Messages

Quick Message

All

Unread 9469

Inbox 16288

Sent

Burlington-Edison-GEAR-UP-Parents 4515

Burlington-Edison-GEAR-UP-Students 4954

All

Showing 1126 through 1150 of 9469

Name	Message	Program(s)	Signal	Date / Time
B [REDACTED]	Carla said I was completely done with algebra	Burlington-Edison-GEAR-UP-Students		Aug 5, 2021 11:00:55 AM
K [REDACTED]	Good morning. I'm doing alright! She is healing up nicely from what I can see	Burlington-Edison-GEAR-UP-Students		Aug 5, 2021 10:23:10 AM
L [REDACTED]	Yes	Burlington-Edison-GEAR-UP-Students		Aug 5, 2021 10:03:10 AM
R [REDACTED]	It should be working again at around 3 or 5	Burlington-Edison-GEAR-UP-Students		Aug 5, 2021 9:30:08 AM
K [REDACTED]	I will not be making my zoom today but I will be doing my lesson	Burlington-Edison-GEAR-UP-Students		Aug 5, 2021 9:16:20 AM
J [REDACTED]	I won't be able to join I have a program that I'm going to be attending	Burlington-Edison-GEAR-UP-Students		Aug 5, 2021 9:07:20 AM

communication
visible by whole
team

respond to
individual
students

Example of Signal Vine communication

Zoom link

See you tomorrow at credit recovery! Inbox x



Caria Carvallo <ccarvallo@be.wednet.edu>

to Heather, Yaritza, bcc: Diego, bcc: Makaela, bcc: Miguel, bcc: Crystal, bcc: Silvia, bcc: Julianna, bcc: Odalys, bcc: Yasmin, bcc: Brisa, bcc: Bryan, bcc: Stacy, bcc: Abigail, bcc: Cri

Mon, Jul 26



Happy Monday!

Get ready for week 3 of credit recovery! We are so proud of the progress you have been making, every lesson completed is one step towards high school graduation and *you* are making it happen!

Here is the link to [this week's Zoom session](#). We will see you on **Tuesday and Thursday from 1:30-3:30pm.**

We love having you at credit recovery, thank you for making the commitment to show up. Remember that unless it's an emergency we expect you to be there for your entire session. Contact us at (425) 405-5809 if you have any questions.

Let's make it a great week!

-Caria and GEAR UP



cheesy GIF to
embarrass
myself/make
students
laugh?

time that
students
needed to
show up at

Example of Weekly Email



Our **P**lan today:

I. Problem

→ We'll explain why we needed to do this work.

II. Process & Partners

→ We'll tell you how we set up our program.

→ We'll highlight all the supports we needed.

III. **Proof**

→ **We have data and testimonials for you!**

IV. Projections

→ We'll talk about our next steps. We're not finished!

A large, bold, blue capital letter 'P' is centered on a bright yellow rectangular sticky note. The sticky note is attached to a white background with a small piece of clear tape at the top. The note has a slightly folded bottom edge, giving it a three-dimensional appearance. The letter 'P' is the first letter of the word 'Plan' from the title above.

Summer 2021

July 13-August 26

Tues/Thurs

2 hour sessions

57 students engaged

65 math/science credits earned back

271% increase from summer 2020

Our program ran MUCH more smoothly as a result of :

- getting started earlier
- streamlining as much as possible
- smart hiring!

Pproof: Data



Anecdotal: students participated in summer credit recovery are showing higher levels of engagement overall (which was actually always an objective).



*QR code for the online
gradebook*

(also in your packet!)



Anthony

Our **P**lan today:

I. Problem

→ We'll explain why we needed to do this work

II. Process & Partners

→ We'll tell you how we set up our program

→ We'll highlight all the supports we needed.

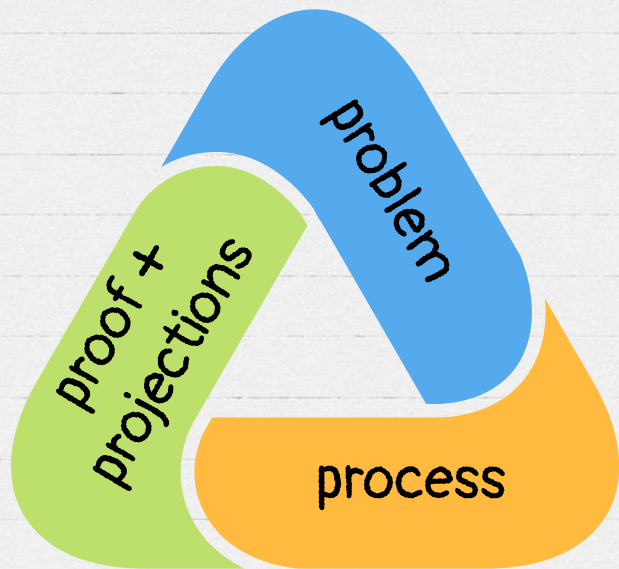
III. Proof

→ We have data and testimonials for you!

IV. **Projections**

→ We'll talk about our next steps. We're not finished!

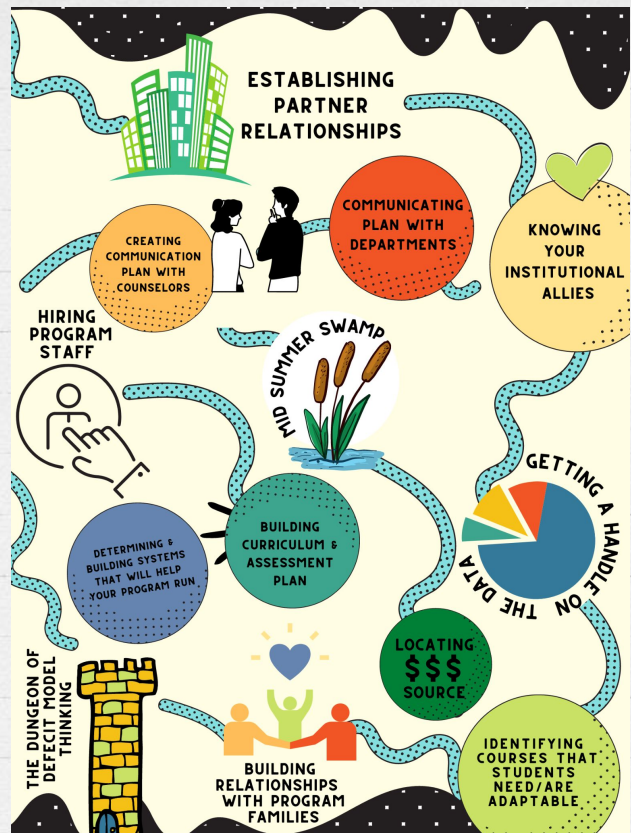
A large, bold, blue capital letter 'P' is centered on a bright yellow rectangular sticky note. The sticky note is attached to a white background with a small piece of clear tape at the top. The entire scene is set against a light brown wooden surface.



What do we do with the remaining incompletes?

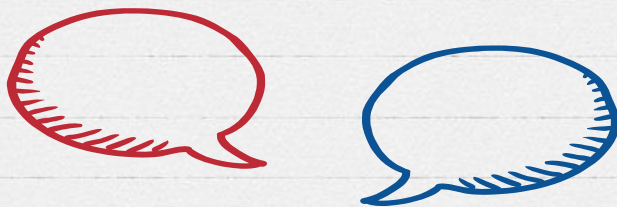
What do we do with the incompletes that aren't math/science?

What do we do with this curriculum now?



Where do you think
your building/district
is on this map?

Turn & Talk





Back to the survey!



Heather Paton, GEAR UP

hpaton@be.wednet.edu



@be_gearup

&

Sam Wasson, Teacher

swasson@be.wednet.edu



@wass_behs



BURLINGTON-EDISON
S C H O O L D I S T R I C T



RISE UP/GEAR UP

UNIVERSITY *of* WASHINGTON