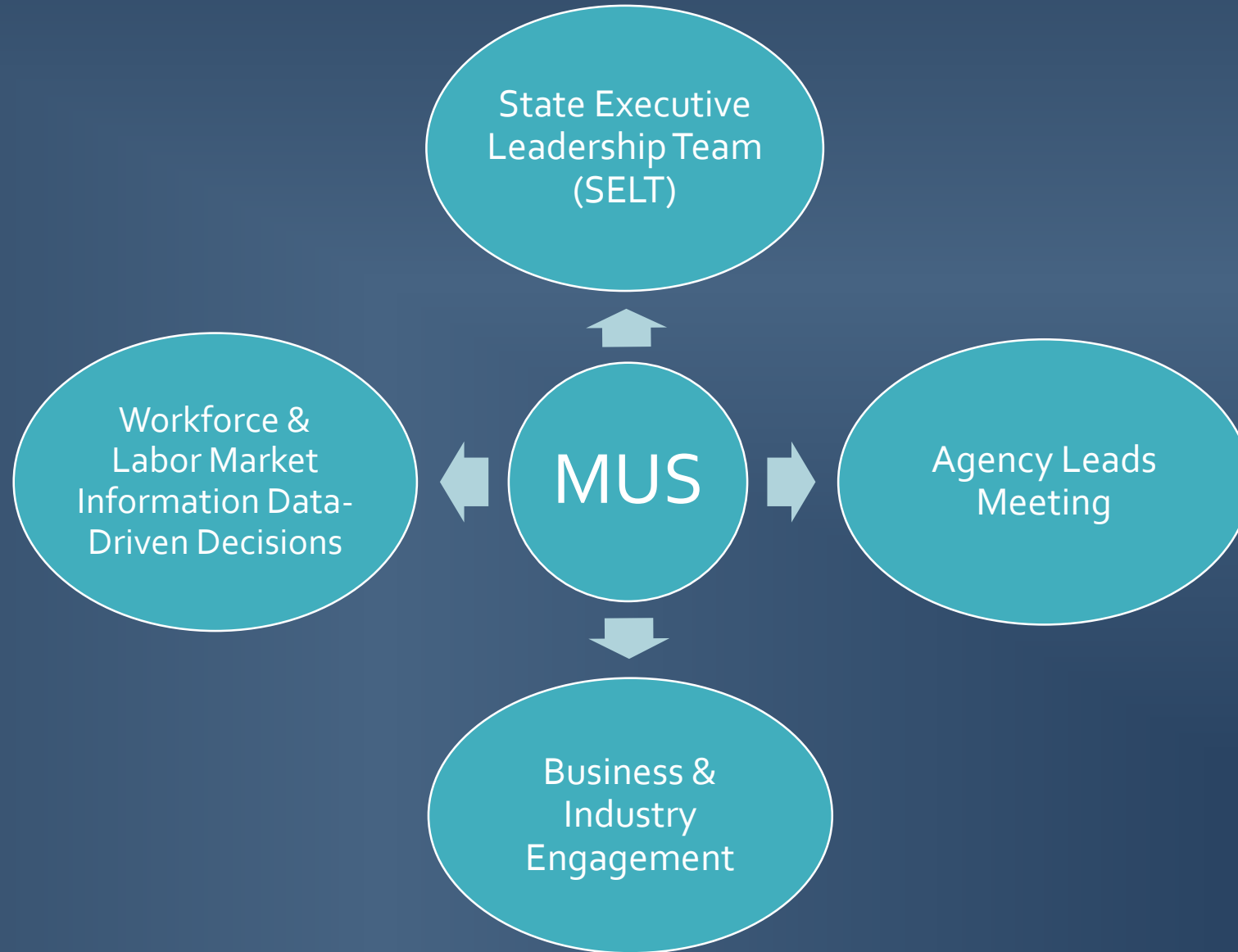


Career and Technical Education Update



Jacque Treaster, Director of Dual Enrollment and Career & Technical Education

Katy Brooke, Perkins Program Manager



Comprehensive Local Needs Assessment:

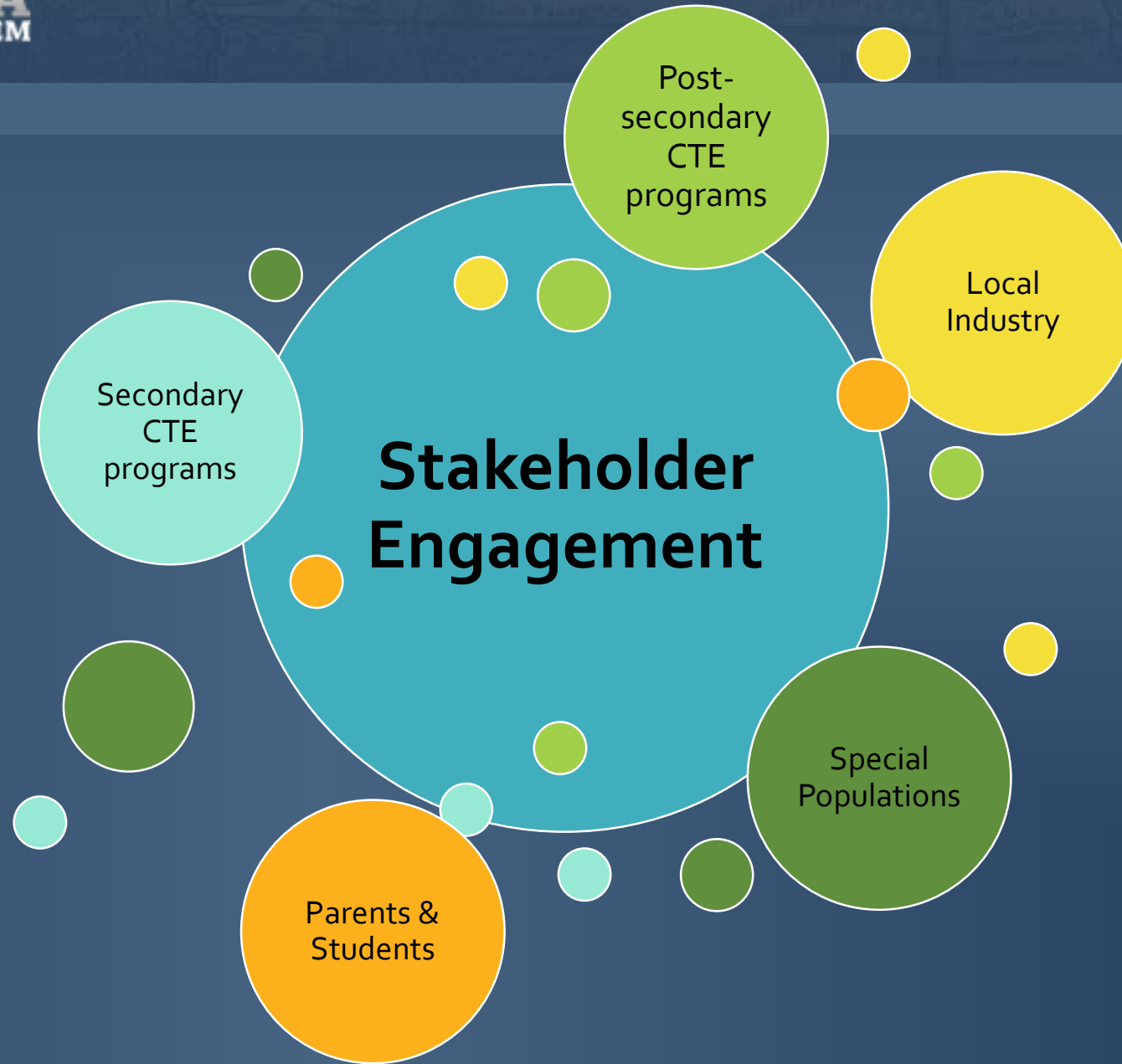
- New Perkins V requirement for all funding recipients (LEAs)
- Bridge between industry and CTE
- Common regional vision for workforce and CTE programming
- CTE/Labor Market alignment



CLNA Process



Perkins V – Comprehensive Local Needs Assessment



PART B-2: EVALUATION OF LABOR MARKET ALIGNMENT

Use the prompts on this worksheet to determine how well your district's CTE programs are aligned to local, regional, and state labor demands. Address those statements and questions that provide the best and most relevant feedback to your district.

For detailed instructions on completing this section, please see: [Labor Market Alignment](#)

Consider the following statements, identify those that best match your district, and choose the most appropriate response.

1—This is a Strength | 2—This is satisfactory | 3—This area needs some improvement | 4—This area needs major improvement

	Rating				Briefly list strengths and/or areas of focus for improvement.	Indicate evidence reviewed.
	1	2	3	4		
Programs are aligned to projected industry demand.						
The district has policies in place to respond to changes in the labor market and develop new, or refine existing, CTE programs.						
Industry partners indicate that students graduate ready to enter high-skill, in-demand, and high-wage industries without remediation.						
Programs graduate employees that thrive in the workplace						
Programs provide opportunities for students with disabilities, English learners, or other special populations to access the local labor market.						

Further questions to consider:

- What are the highest projected growth industries in the region/state? What occupations are part of that industry?
- How do CTE program enrollments match projected job openings? Where are the biggest gaps?
- What are the emerging occupations, and are programs available for students in those areas?